



Performance Report for: <https://www.wpgrail.co/>

Report generated: Wed, Sep 29, 2021 1:46 AM -0700
 Test Server Location: Chicago, IL, USA
 Using: Chrome (Desktop) 90.0.4430.212, Lighthouse 8.3.0

A	Performance	Structure	L. Contentful Paint	T. Blocking Time	C. Layout Shift
	93%	100%	745ms	3ms	0.23

Top Issues

IMPACT	AUDIT	
Med-Low	Avoid large layout shifts	5 elements found
Low	Eliminate render-blocking resources	Potential savings of 39ms
Low	Avoid an excessive DOM size	564 elements
Low	Avoid enormous network payloads	Total size was 694KB
Low	Avoid long main-thread tasks	4 long tasks found

Page Details



Total Page Size - 694KB



Total Page Requests - 33



■ HTML
 ■ JS
 ■ CSS
 ■ IMG
 ■ Video
 ■ Font
 ■ Other

How does this affect me?

Today's web user expects a fast and seamless website experience. Delivering that fast experience can result in increased visits, conversions and overall happiness.

As if you didn't need more incentive, **Google has announced that they are using page speed in their ranking algorithm.**

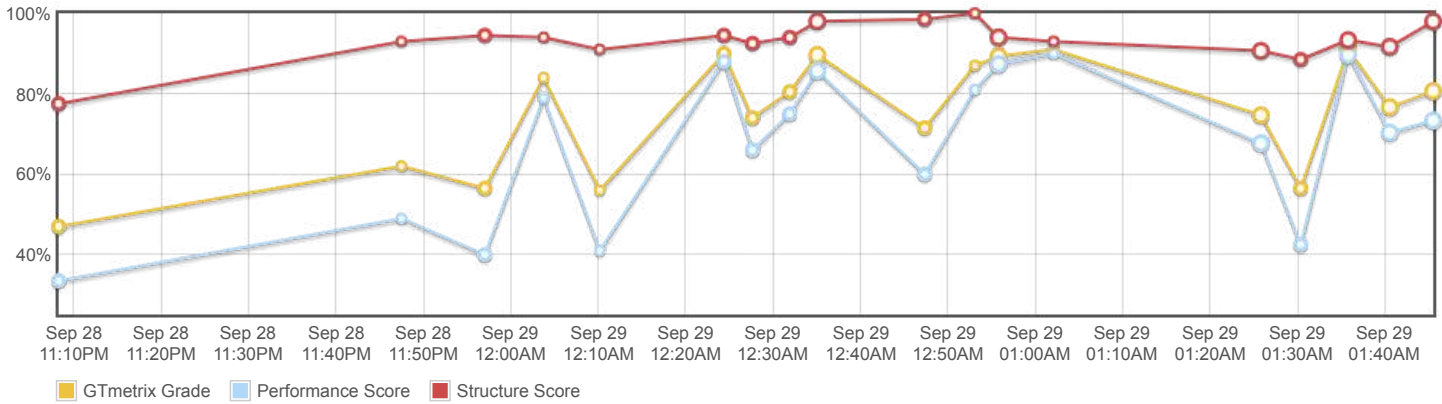
About GTmetrix



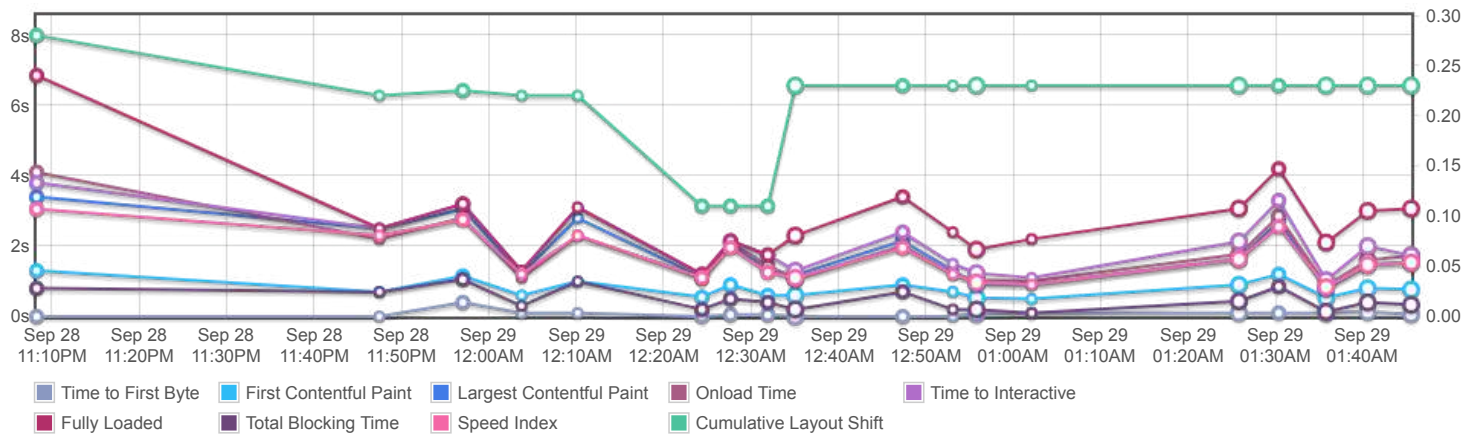
GTmetrix is developed by the good folks at **Carbon60**, a Canadian hosting company with over 25 years experience in web technology.

<https://carbon60.com/>

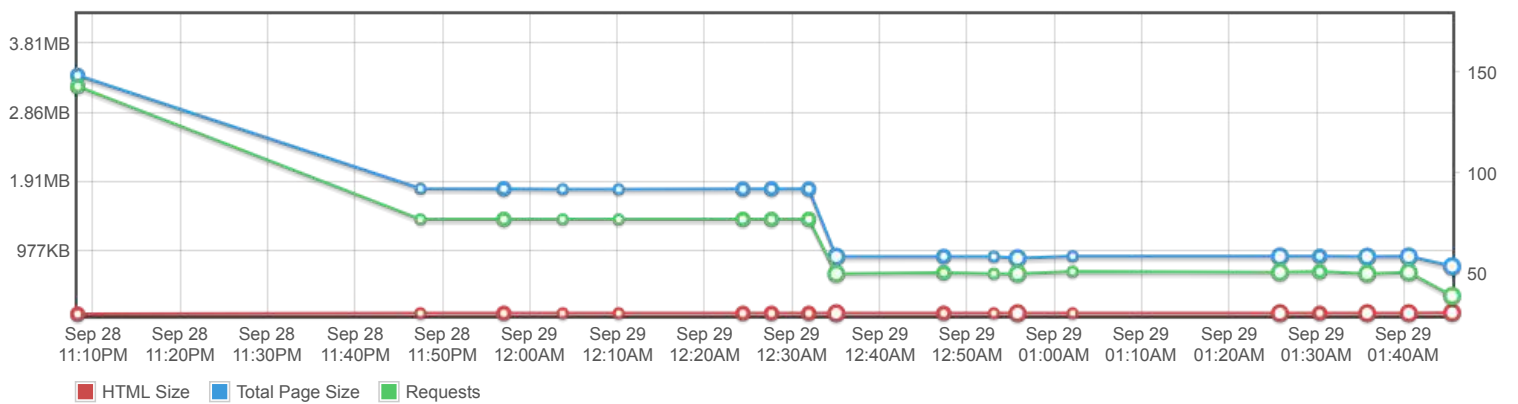
Page scores



Page metrics

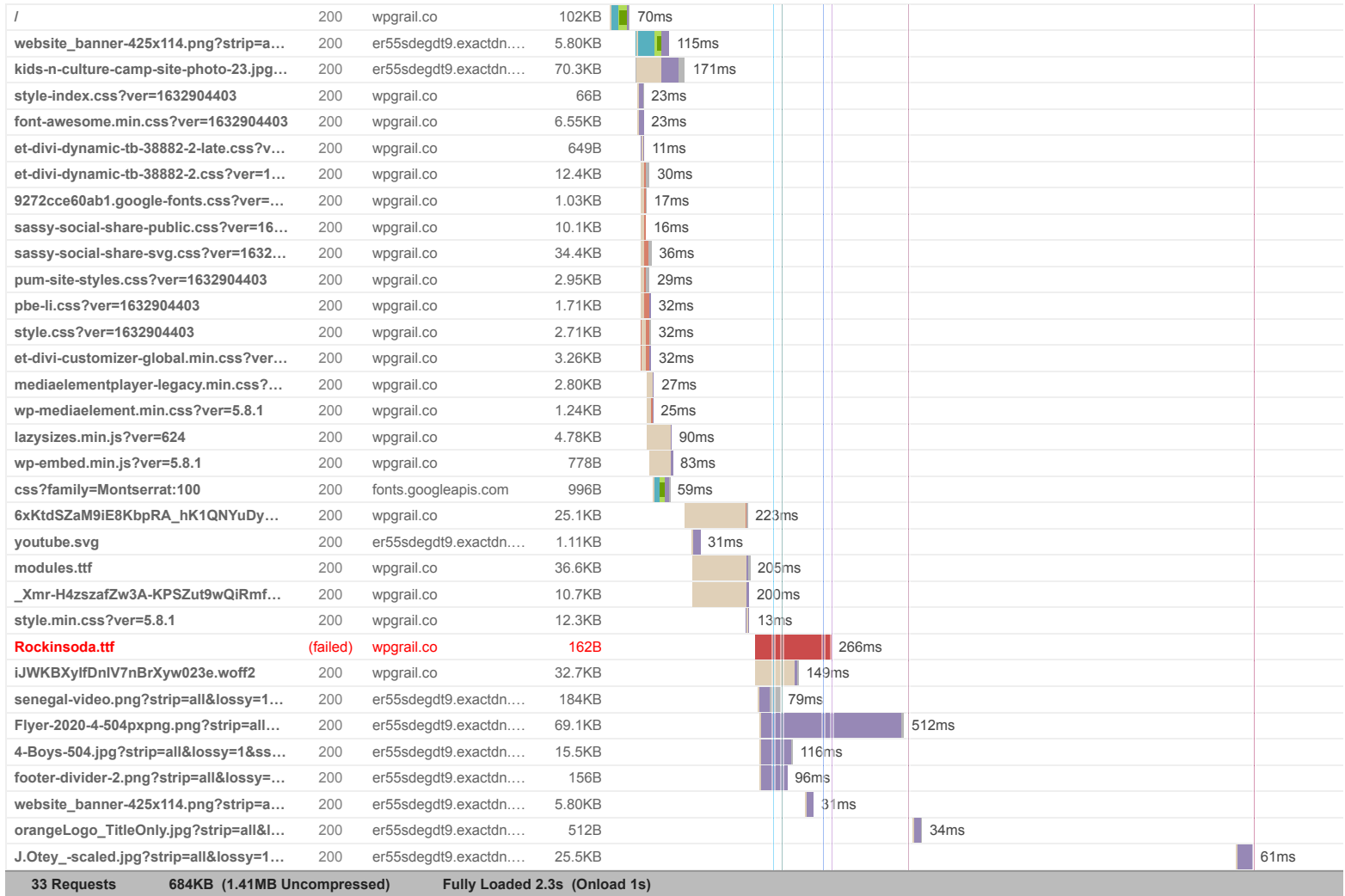


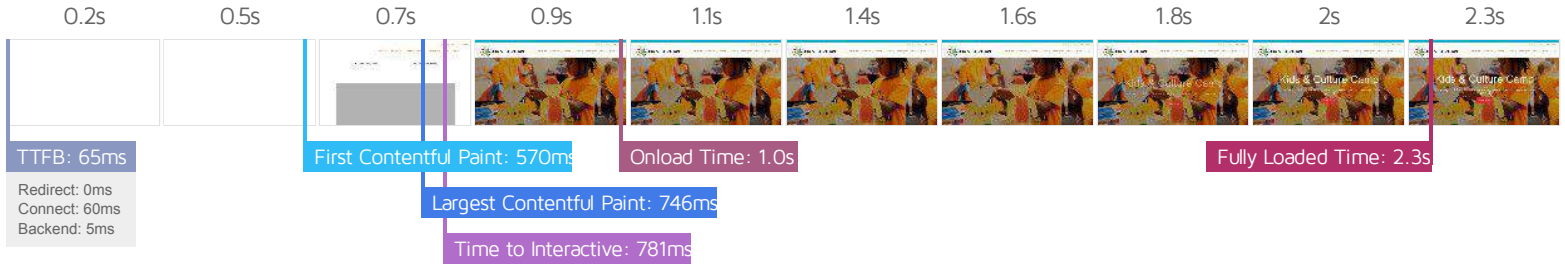
Page sizes and request counts



The waterfall chart displays the loading behaviour of your site in your selected browser. It can be used to discover simple issues such as 404's or more complex issues such as external resources blocking page rendering.

Welcome - Kids & Culture Camp





Performance Metrics

<p>First Contentful Paint</p> <p>How quickly content like text or images are painted onto your page. A good user experience is 0.9s or less.</p>	<p>Good - Nothing to do here</p> <p>569ms</p>	<p>Time to Interactive</p> <p>How long it takes for your page to become fully interactive. A good user experience is 2.5s or less.</p>	<p>Good - Nothing to do here</p> <p>781ms</p>
<p>Speed Index</p> <p>How quickly the contents of your page are visibly populated. A good user experience is 1.3s or less.</p>	<p>Good - Nothing to do here</p> <p>789ms</p>	<p>Total Blocking Time</p> <p>How much time is blocked by scripts during your page loading process. A good user experience is 150ms or less.</p>	<p>Good - Nothing to do here</p> <p>3ms</p>
<p>Largest Contentful Paint</p> <p>How long it takes for the largest element of content (e.g. a hero image) to be painted on your page. A good user experience is 1.2s or less.</p>	<p>Good - Nothing to do here</p> <p>745ms</p>	<p>Cumulative Layout Shift</p> <p>How much your page's layout shifts as it loads. A good user experience is a score of 0.1 or less.</p>	<p>More than recommended</p> <p>0.23</p>

Browser Timings

Redirect	0ms	Connect	60ms	Backend	5ms
TTFB	65ms	DOM Int.	499ms	First Paint	570ms
DOM Loaded	602ms	Onload	1.0s	Fully Loaded	2.3s

IMPACT	AUDIT	
Med-Low	Avoid large layout shifts	5 elements found
Low	Eliminate render-blocking resources	Potential savings of 39ms
Low	Avoid an excessive DOM size	564 elements
Low	Avoid enormous network payloads	Total size was 694KB
Low	Avoid long main-thread tasks	4 long tasks found
Low	Reduce JavaScript execution time	79ms spent executing JavaScript
Low	Reduce unused CSS	Potential savings of 106KB
Low	Reduce initial server response time	Root document took 5ms
Low	Defer offscreen images	Potential savings of 269KB
Low	Avoid non-composited animations	11 animated elements found
Low	Avoid chaining critical requests	15 chains found
N/A	Largest Contentful Paint element	1 element found
N/A	Minimize main-thread work	Main-thread busy for 863ms
N/A	Reduce the impact of third-party code	Total size was 996B
N/A	User Timing marks and measures	